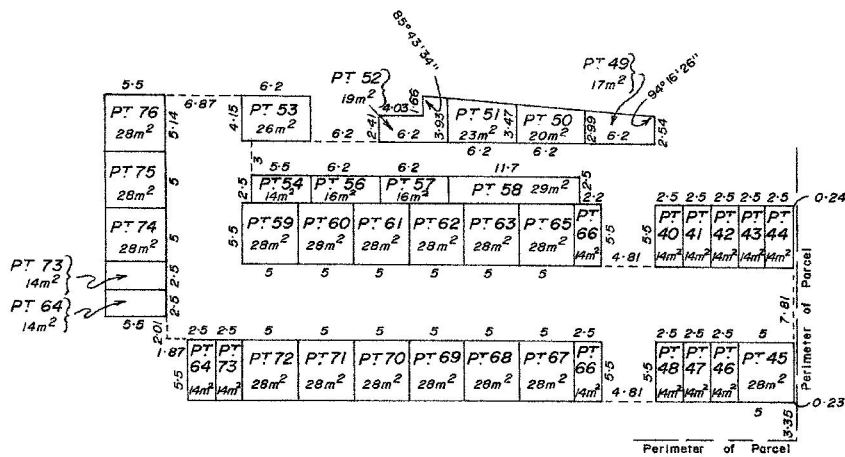


BASEMENT FLOOR



NOTES

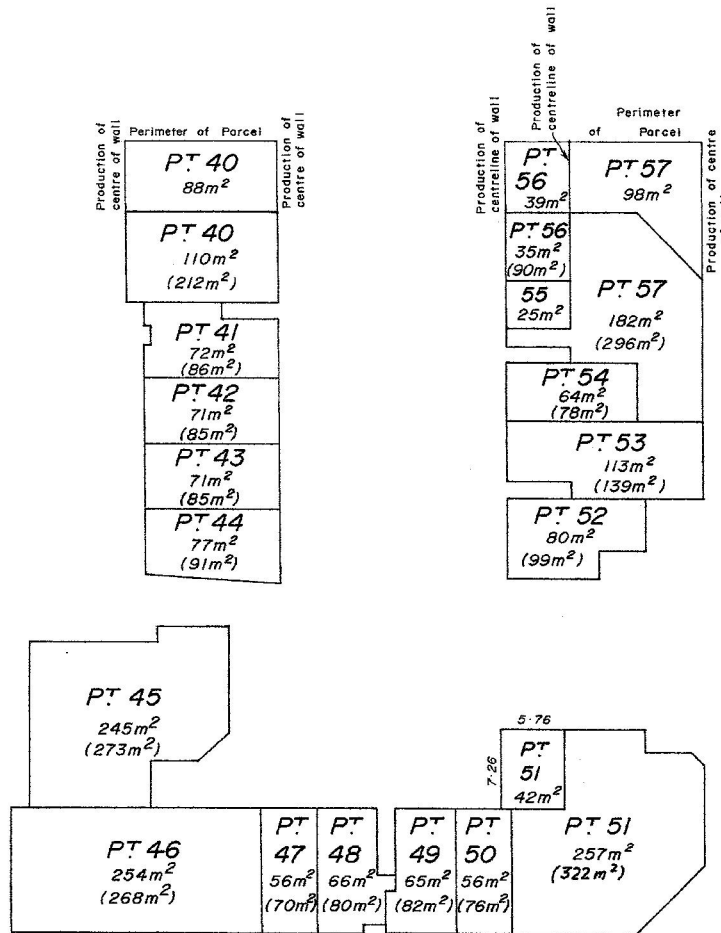
1. The stratum of those parts of part lots uncovered, extends between the floor level and the ceiling level.
2. For other parts of lots 40 to 54 and 56 & 57 see sheet 2 of 3 sheets, and for other parts of lots 58 to 76 see sheet 3 of 3 sheets.

Scale 1 : 500

STRATA PLAN No.

8383

GROUND FLOOR



NOTES

1. The stratum of part lot 51 external to the building extends between 0.1 of a metre below and 5 metres above the ground floor of the building of part lot 51 on sheet 2 of 3 sheets.
2. The stratum of part lots 40, 56 & 57 external to the building extends between 2 metres below and 5 metres above the ground floor of the building of part lots 40, 56 & 57 respectively on sheet 2 of 3 sheets.
3. Centrelines of walls are boundaries of all lots and part lots on sheet 2 of 3 sheets.
4. For other parts of lots 40 to 54 and 56 & 57 see sheet 1 of 3 sheets.

Scale 1 : 500

STRATA PLAN No.
FIRST FLOOR

8383

PT 58 57m ² (86m ²)	PT 59 49m ² (77m ²)
--	--

PT 76 43m ² (71m ²)
PT 75 48m ² (76m ²)
PT 74 48m ² (76m ²)
PT 73 54m ² (82m ²)

PT 60 70m ² (98m ²)	PT 61 59m ² (87m ²)	PT 62 70m ² (98m ²)
PT 67 44m ² (72m ²)	PT 63 44m ² (72m ²)	
PT 66 44m ² (72m ²)	PT 64 92m ² (120m ²)	
PT 65 62m ² (90m ²)		

PT 72 72m ² (100m ²)	PT 71 38m ² (66m ²)	PT 70 38m ² (66m ²)	PT 69 42m ² (70m ²)	PT 68 64m ² (92m ²)
---	--	--	--	--

NOTES

1. Centrelines of walls are boundaries of all part lots on sheet 3 of 3 sheets.
2. For other parts of lots 58 to 76 see sheet 1 of 3 sheets.

Scale 1 : 500